

## craftsman battery backup garage door opener manual

---



**File Name:** craftsman battery backup garage door opener manual.pdf

**Size:** 2285 KB

**Type:** PDF, ePub, eBook

**Category:** Book

**Uploaded:** 18 May 2019, 22:30 PM

**Rating:** 4.6/5 from 567 votes.

**Status:** AVAILABLE

Last checked: 11 Minutes ago!

**In order to read or download craftsman battery backup garage door opener manual ebook, you need to create a FREE account.**

[\*\*Download Now!\*\*](#)

eBook includes PDF, ePub and Kindle version

[Register a free 1 month Trial Account.](#)

[Download as many books as you like \(Personal use\)](#)

[Cancel the membership at any time if not satisfied.](#)

[Join Over 80000 Happy Readers](#)

### Book Descriptions:

We have made it easy for you to find a PDF Ebooks without any digging. And by having access to our ebooks online or by storing it on your computer, you have convenient answers with craftsman battery backup garage door opener manual . To get started finding craftsman battery backup garage door opener manual , you are right to find our website which has a comprehensive collection of manuals listed.

Our library is the biggest of these that have literally hundreds of thousands of different products represented.



## Book Descriptions:

# craftsman battery backup garage door opener manual



You can unsubscribe at any time. You can unsubscribe at any time. Download the FREE Craftsman Smart Garage Door Opener app Craftsman Smart Garage Door Opener. If you do not find what you're looking for on this page, please call our customer service team for prompt answers to your question. With quality at the forefront of every one. That's why we offer choices for every line of work. Follow us as we journey across America introducing new products and opening new. You can unsubscribe at any time. You can unsubscribe at any time. The Craftsman Garage Door Opener DC Belt with LCD SmartMotion Detecting control console opens and closes door from inside garage while sensing your presence and turning on opener lights automatically. Provides time, temperature, light and lock settings and system diagnostic messages. Wireless keyless entry pad allows access to garage without a key or remote using a secure 4digit programmable PIN. Manual Release Capability allows you to manually open or close garage door. Safety reversing sensors create an invisible beam that senses any obstruction in the way of the closing door and automatically reverses door before contact is made. Light delay feature turns lights off after a maximum of 4 minutes. Extension kits to complete installation for 8 and 10 doors are available. Professional installation available. Weighs 38.9 lbs. Warranty 10 year motor; 3 year parts. This garage door opener has an ac motor on 110vac. A battery backup is not available. The remotes are rolling code on 315. The rail is style is Split Square. You're in the right place. Do NOT connect prior to installation. Installation Follow the directions in the enclosed manual to complete the garage door opener installation. Check Signal Strength. If you see WiFi signal is strong. You're all set! Install your new garage door opener. Visit [smartgdo.craftsman.com](http://smartgdo.craftsman.com) for more details WiFi signal is weak. The garage door opener will likely connect to your WiFi network. <http://pspectr.ru/userfiles/flytech-dragonfly-instruction-manual.xml>

- **craftsman battery backup garage door opener manual, craftsman diehard battery backup garage door opener manual, craftsman battery backup garage door opener manual, craftsman battery backup garage door opener manual pdf, craftsman battery backup garage door opener manual instructions, craftsman battery backup garage door opener manual 2017, craftsman battery backup garage door opener manual 2016, craftsman battery backup garage door opener manual free, craftsman battery backup garage door opener manual downloads, craftsman battery backup garage door**

**opener manual diagram, craftsman battery backup garage door opener manual user.**



Fasten the manual near the garage door after installation. Periodic checks of the opener are required to ensure safe operation. DO NOT install on a one-piece door if using devices or features providing unattended close. Mechanical Electrical When you see these Safety Symbols and Signal Words on the following pages, they will alert you to the possibility of serious injury or death if you do not comply with the warnings that accompany them. The hazard may come from something mechanical or from electrical shock. Read the warnings carefully. Read them carefully. WARNING This product can expose you to chemicals including lead, which are known to the State of California to cause cancer or birth defects or other reproductive harm. For more information go to [www.P65Warnings.ca.gov](http://www.P65Warnings.ca.gov). Unattended Operation The Timer to Close TTC feature, the Craftsman Garage Door app, and Smart Garage Door and Gate Monitor are examples of unattended close and are to be used ONLY with sectional doors. Any device or feature that allows the door to close without being in the line of sight of the door is considered unattended close. The Timer to Close TTC feature, the Smart Home Control, and any other Smart Control devices are to be used ONLY with sectional doors. 3 Release the door. If balanced, it should stay in place, supported entirely by its springs. 3. Raise and lower the door to check for binding or sticking. If your door binds, sticks, or is out of balance, call a trained door system technician. 4. Check the seal on the bottom of the door. If there is a torsion spring or center bearing plate in the way of the header bracket, it may be installed with in feet

1. <http://bajajsports.com/userfiles/flytouch-4-user-manual.xml>



2 m to the left or right of the door center. See page 14. Sectional Door One-Piece Door To p r

event possible **SERIOUS INJURY** or **DEATH**! ALWAYS call a trained door systems technician if garage door binds, sticks, or is out of balance. An unbalanced garage door may NOT reverse when required. Unattended devices and features are to be used ONLY with sectional doors. To prevent damage to garage door opener **ALWAYS** disable locks BEFORE installing and operating the opener. The garage door opener will likely connect to your WiFi network. If not, try one of the options below. You're all set! Install your new garage door opener. Visit [smartgdo.craftsman.com](http://smartgdo.craftsman.com) for more details See Smartphone Control page 34 to connect your garage door opener to your WiFi network. Survey your garage area to see if any of the conditions below apply to your installation. A conditionalmaterials may be required. You may find it helpful to refer back to this page and the accompanying illustrations as you proceed with the installation of your opener. The header bracket must be securely fastened to structural supports. If not, Model 139.53702 Emergency Key Release is required. See Accessories page. Otherwise, the safety reversing system may not work properly. See Adjustment Step 2. Floor or door should be repaired. **SECTIONAL DOOR INSTALLATION** Do you have a steel, aluminum, fiberglass or glass panel door. If so, horizontal and vertical reinforcement is required Installation Step 8. If there is a torsion spring or center bearing plate in the way of the header bracket, it may be installed within 4 feet 1.22 m to the left or right of the door center.

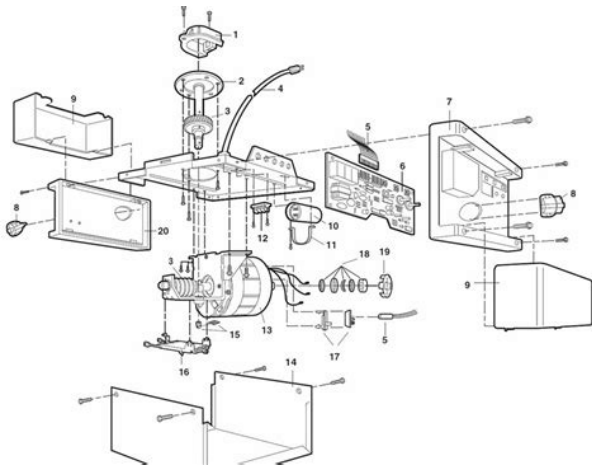
See Installation Steps 1 and 8. If your door is more than 7 feet 2.13 m high, see rail extension kits listed on Accessories page. Extension Spring Horizontal and vertical reinforcement is needed for lightweight garage doors berglass, steel, aluminum, door with glass panels, etc.. See page 18 for details. If your door is lightweight, refer to the information relating to sectional doors in Installation Step 8. Without a properly installed safety reversing sensor, person especially small child could be **SERIOUSLY INJURED** or **KILLED** by a closing garage door. Otherwise, the safety reversing system may NOT work properly. If anything is missing, carefully check the packing material. Hard wear for assembly and installation is shown on the next page. Save the cart on and packing material until installation and adjustment is complete. The front rail has a cutout "window" at the door end. The front rail has a rail tab. This tab MUST be on the top of the rail when assembled. 1. Remove the straight door arm and hanging bracket package and set aside for Installation Step 5 and 9. **NOTE** To prevent **INJURY** while unpacking the rail carefully remove the straight door arm stored with the rail section. 2. Align the rail sections on a flat surface as shown and slide the tapered ends into the larger ones. If they become loose during shipping, check all packing material. Snap them back into position as shown. 6. Slide the trolley assembly along the rail from the back end to the screw driver. 7. Slide the rail onto the "U" bracket, until it reaches all the stops on the top and sides of the "U" bracket.



<https://www.informaquiz.it/petrgenis1604790/status/flotaganis23052022-1530>

To prevent INJURY from pinching, keep hands and fingers away from the joints while assembling the rail. The use of power tools may permanently damage the garage door opener. The inside center should be greased. If dry, re-grease to ensure proper operation. 3. Place the idler pulley into the window as shown. 4. Insert the idler bolt from the top through the rail and pulley. The ribbed side must contact the pulley. 2. Hook the trolley connector into the retaining slot on the trolley as shown Figure 1. 3. With the trolley against the screwdriver, disengage the remainder of the belt along the rail length. The sprocket teeth must engage the belt. 4. Check to make sure the belt is not twisted. Connect the trolley threaded shaft with the master link Figure 3. Push pins of master link bar through holes in end of belt and trolley threaded shaft. Do not use any tools. An improperly balanced door may NOT reverse when required and could result in SEVERE INJURY or DEATH. 3. ALL repairs to cables, spring assembly and other hardware MUST be made by a trained door system technician BEFORE installing opener. 4. Disable ALL locks and remove ALL ropes connected to garage door BEFORE installing opener to avoid entanglement. 5. Install garage door opener 7 feet 2.13 m or more above floor. 6. Mount the emergency release with in reach, but at least 6 feet 1.83 m above the floor and avoiding contact with vehicles to avoid accidental release. 7. NEVER connect garage door opener to power source until instructed to do so. 8. NEVER wear watches, rings or loose clothing while installing or servicing opener.

<http://oxadreamland.com/images/colt-firearms-manuals.pdf>



They could be caught in garage doors or open er mechanism s. 9. In stall w all mou nt ed g ar a ge d o o r con trol wit hin sig ht o f th e g ar age d o o r. Unat ten de d d evice s an d fea tu r e s ar e to b e u sed ONLY wit h se ctio nal d o o r s. 13 DO NOT inst all head er bracket o ver drywall. A n u nb alan ced g ar a ge d o o r m ig ht NOT rever s e when requ ir ed. In st allatio n p r o ced ures v ar y ac cordin g to g ar age d o o r typ es. Fo llow th e ins tr u ctio n s w ich ap ply to y ou r do or. 1. C l o s e th e d o o r an d m ar k th e in sid e ver ti cal cen terline o f th e g ar age do or. 2. E xt end th e lin e on to th e h ead er w all abo ve th e do or. I f yo u n eed to in stall th e h ead er bracket o n a 2 x4 o n w all o r ceilin g, use lag screw s n ot provi de d to secu r e ly fas ten th e 2x4 to struct ural su pp orts as sh own h er e an d o n p age 1 5. 3. Open yo ur d o o r to th e h igh est po in t o f travel as sh own. Th is h eigh t w ill p r o vid e t r av el clear an ce fo r th e t op ed ge o f th e do or. Fo llow th e ins tr u ctio n s w ich w ill wo r k b est fo r yo ur pa r ti cular requ ir emen ts. Do n ot in stall th e h e ad er br a cke t o ver d r yw all. I f in sta ll in g i n t o m a so n r y, u se co ncret e an ch or s n ot provi de d. **W A L L H E A D E R B R A C K E T I N S T A L L A T I O N** 1. C e n t e r th e b r a c k e t o n th e ver ti cal cen t e r l i n e w i t h th e b o t t o m e d g e o f th e b r a c k e t o n th e h o r i z o n t a l l i n e a s s h o w n w i t h th e a r r o w p o i n t i n g t o w a r d th e ceilin g. 2. M a r k th e ver ti cal se t o f b r a c k e t h o l e s. Th e b r a c k e t c a n b e m o u n t e d f l u s h a g a i n s t th e ceilin g w h e n clear an ce i s m i n i m a l. 3. M a r k th e si d e h o l e s. U s e p a c k i n g m a t e r i a l a s a p r o t e c t i v e b a s e. **NOTE** I f th e d o o r s p r i n g i s i n th e w a y, yo u w i l l n e e d h e l p. H a v e s o m e o n e h o l d th e o p e n e r s e c u r e l y o n a t e m p o r a r y s u p p o r t t o a l l o w th e r a i l t o c l e a r th e s p r i n g. 2.

<http://oldsaltsclub.com/images/colt-double-eagle-series-90-manual.pdf>



Position the rail bracket against the header bracket. 3. Align the bracket holes and join with a clevis pin as shown. 4. Insert a ring fastener to secure. **SECTIONAL DOOR OR ONEPIECE DOOR WITH TRACK A 2x4** laid flat is convenient for setting an ideal door to rail distance. 1. Raise the opener onto a step ladder. You will need help at this point if the ladder is not tall enough. 2. Open the door all the way and place a 2x4 laid flat on the top section beneath the rail Figure 1. 3. If the top section or panel hits the trolley when you raise the door, pull down on the trolley release arm to disconnect in rear and outer sections. Slide the outer trolley to ward the motor unit. The trolley can remain disconnected until Installation Step 12 is completed. **ENGAGED RELEASED Trolley Release Arm ONEPIECE DOOR WITH HOUTRACK A 2x4** on its side is convenient for setting a good door to rail distance. 1. Raise the opener onto a step ladder. You will need help at this point if the ladder is not tall enough. 2. Open the door all the way and place a 2x4 on its side on the top section of the door beneath the rail Figure 2. 3. The top of the door should be level with the top of the motor unit. Door Header Bracket Top of Door 2x4 is used to determine the correct mounting height from ceiling. Rail Figure 1 Figure 2 17 Yours may be different. Hanging brackets should be angled Figure 1 to provide rigid support. On finished ceilings Figures 2 and 3, attach a sturdy metal bracket to structural supports before installing the opener. Concrete anchors MUST be used if installing ANY brackets into masonry. Do not remove the lens. 2.

Insert an A19 incandescent 100 watt maximum or compact fluorescent 26 W, 100 W equivalent light bulb into the light socket. Then the lights will turn OFF. 3. Reverse the procedure to close the lens. 4. If the bulb burns out prematurely due to vibration, replace with a garage door opener bulb. Use A19, standard neck garage door opener for replacement. **NOTE** Do not use halogen, short neck, or specialty light bulbs as these may overheat the end panel or light socket. Do not use LED bulbs as they may reduce the range or performance of your remote controls. To prevent possible OVERHEATING of the end panel or light socket Use ONLY A19 incandescent 100W maximum or compact fluorescent 26 W maximum light bulbs. **DO NOT** use incandescent bulbs larger than 100 W. **DO NOT** use compact fluorescent light bulbs larger than 26W 100 W equivalent. If you become unaided, you could fall. Trolley Release Arm Emergency Release Handle Overhand Knot Trolley 19 A horizontal reinforcement brace should be long enough to be secured to the wall with vertical supports. A vertical reinforcement brace should cover the height of the top panel. Figure 1 shows one piece of angle iron as the horizontal brace. For the vertical brace, 2 pieces of angle iron are used to create a U shaped support. The

best solution is to check with your garage door manufacturer for an opener installation door reinforcement kit. NOTE Many door reinforcement kits provide for direct attachment of the clevis pin and door arm. Contact the garage door manufacturer or installer for opener reinforcement instructions or reinforcement kit.

<http://rescue.bg/wp-content/plugins/formcraft/file-upload/server/content/files/1628726f3596f2---cafe-swiss-cs100-service-manual.pdf>

The y apply to one piece doors also. IMPORTANT The groove on the st r a i g h t d o o r a r m M U S T f a c e a w a y f r o m t h e c u r v e d d o o r a r m F i g u r e 4. S E C T I O N A L D O O R S O N L Y 1. M a k e s u r e g a r a g e d o o r i s f u l l y c l o s e d. F i n d t w o p a i r s o f h o l e s t h a t l i n e u p a n d j o i n s e c t i o n s. S e l e c t h o l e s a s f a r a p a r t a s p o s s i b l e t o i n c r e a s e d o o r a r m r i g i d i t y F i g u r e 2. H o l e a l i g n m e n t a l t e r n a t i v e F i g u r e 3 I f h o l e s i n c u r v e d a r m a r e a b o v e h o l e s i n s t r a i g h t a r m, d i s c o n n e c t s t r a i g h t a r m. T r o l l e y w i l l r e e n g a g e a u t o m a t i c a l l y w h e n o p e n e r i s o p e r a t e d d u r i n g t h e a d j u s t m e n t s. Y o u r g a r a g e d o o r o p e n e r i s c o m p a t i b l e w i t h u p t o 2 S m a r t C o n t r o l p a n e l s. I n s t a l l t h e d o o r c o n t r o l w i t h i n s i g h t o f t h e d o o r a t a m i n i m u m h e i g h t o f 5 f e e t 1.5 m a b o v e f l o o r s, l a n d i n g s, s t e p s o r a n y o t h e r a d j a c e n t w a l k i n g s u r f a c e w h e r e s m a l l c h i l d r e n c a n n o t r e a c h, a n d a w a y f r o m t h e m o v i n g p a r t s o f t h e d o o r. N O T E F o r g a n g b o x i n s t a l l a t i o n s i t i s n o t n e c e s s a r y t o d r i l l h o l e s o r i n s t a l l t h e d r y w a l l a n c h o r s. P r e w i r e d i n s t a l l a t i o n s C h o o s e a n y t w o w i r e s t o c o n n e c t, b u t m a k e n o t e o f w h i c h w i r e s a r e u s e d s o t h a t t h e c o r r e c t w i r e s a r e c o n n e c t e d t o t h e g a r a g e d o o r o p e n e r i n a l a t e r s t e p. A t t a c h t h e t o p s c r e w. A t t a c h t h e w i r e t o t h e w a l l a n d c e i l i n g w i t h t h e s t a p l e s n o t a p p l i c a b l e f o r g a n g b o x o r p r e w i r e d i n s t a l l a t i o n s. T o p r e v e n t p o s s i b l e S E R I O U S I N J U R Y o r D E A T H f r o m e l e c t r o c u t i o n l B e s u r e p o w e r i s N O T c o n n e c t e d B E F O R E i n s t a l l i n g d o o r c o n t r o l. l C o n n e c t d o o r c o n t r o l O N L Y t o 1 2 V O L T l o w v o l t a g e w i r e s.

To p r e v e n t p o s s i b l e S E R I O U S I N J U R Y o r D E A T H f r o m a c l o s i n g g a r a g e d o o r I n s t a l l d o o r c o n t r o l w i t h i n s i g h t o f g a r a g e d o o r, o u t o f r e a c h o f s m a l l c h i l d r e n a t a m i n i m u m h e i g h t o f 5 f e e t 1.5 m a b o v e f l o o r s, l a n d i n g s, s t e p s o r a n y o t h e r a d j a c e n t w a l k i n g s u r f a c e, a n d a w a y f r o m A L L m o v i n g p a r t s o f d o o r. N E V E R p e r m i t a n y o n e t o c r o s s p a t h o f c l o s i n g g a r a g e d o o r. I f a n o b s t r u c t i o n b r e a k s t h e l i g h t b e a m w h i l e t h e d o o r i s c l o s i n g, t h e d o o r w i l l s t o p a n d r e v e r s e t o t h e f u l l o p e n p o s i t i o n, a n d t h e g a r a g e d o o r o p e n e r l i g h t s w i l l f l a s h 1 0 t i m e s. N O T E F o r e n e r g y e f f i c i e n c y t h e g a r a g e d o o r o p e n e r w i l l e n t e r s l e e p m o d e w h e n t h e d o o r i s f u l l y c l o s e d. T h e s l e e p m o d e s h u t s t h e g a r a g e d o o r o p e n e r d o w n u n t i l a c t i v a t e d. T h e s l e e p m o d e i s s e q u e n c e d w i t h t h e g a r a g e d o o r o p e n e r l i g h t b u l b; a s t h e l i g h t b u l b t u r n s o f f t h e s e n s o r L E D s w i l l t u r n o f f a n d w h e n e v e r t h e g a r a g e d o o r o p e n e r l i g h t s t u r n o n t h e s e n s o r L E D s w i l l l i g h t. T h e g a r a g e d o o r o p e n e r w i l l n o t g o i n t o t h e s l e e p m o d e u n t i l t h e g a r a g e d o o r o p e n e r h a s c o m p l e t e d 5 c y c l e s u p o n p o w e r u p. W h e n i n s t a l l i n g t h e s a f e t y r e v e r s i n g s e n s o r s c h e c k t h e f o l l o w i n g l S e n s o r s a r e i n s t a l l e d i n s i d e t h e g a r a g e, o n e o n e i t h e r s i d e o f t h e d o o r. T o p r e v e n t S E R I O U S I N J U R Y o r D E A T H f r o m c l o s i n g g a r a g e d o o r l C o r r e c t l y c o n n e c t a n d a l i g n t h e s a f e t y r e v e r s i n g s e n s o r. T h i s r e q u i r e d s a f e t y d e v i c e M U S T N O T b e d i s a b l e d. G a r a g e d o o r t r a c k i n s t a l l a t i o n p r e f e r r e d 1. S l i p t h e c u r v e d a r m s o v e r t h e r o u n d e d g e o f e a c h d o o r t r a c k, w i t h t h e c u r v e d a r m s f a c i n g t h e d o o r. S n a p i n t o p l a c e a g a i n s t t h e s i d e o f t h e t r a c k.

I t s h o u l d l i e f l u s h, w i t h t h e l i p h u g g i n g t h e b a c k e d g e o f t h e t r a c k, a s s h o w n i n F i g u r e 1. I f y o u r d o o r t r a c k w i l l n o t s u p p o r t t h e b r a c k e t s e c u r e l y, w a l l i n s t a l l a t i o n i s r e c o m m e n d e d. W a l l i n s t a l l a t i o n F i g u r e s 2 a n d 3 1. P l a c e t h e b r a c k e t a g a i n s t t h e w a l l w i t h c u r v e d a r m s f a c i n g t h e d o o r. M a k e s u r e a l l d o o r h a r d w a r e o b s t r u c t i o n s a r e c l e a r e d. B e s u r e t h e l e n s i s n o t o b s t r u c t e d b y a b r a c k e t e x t e n s i o n F i g u r e 5 . 2. F i n g e r t i g h t e n t h e w i n g n u t s. O p t i o n A I n s t a l l a t i o n W i t h o u t P r e W i r i n g 1. R u n t h e b e l l w i r e f r o m b o t h s e n s o r s t o t h e g a r a g e d o o r o p e n e r. A t t a c h t h e w i r e t o t h e w a l l a n d c e i l i n g w i t h t h e s t a p l e s F i g u r e 6 . T w i s t



like colored wires together. To reduce the risk of electric shock, your garage door opener has a grounding type plug with a third grounding pin. This plug will only fit into a grounding type outlet. If the plug does not fit into the outlet you have, contact a qualified electrician to install the proper outlet. **RIGHT WRONG** If permission to wiring is required by your local code, refer to the following procedure. The opener must be grounded. 4. Reinstall the cover. To prevent possible **SEVERE INJURY** or **DEATH** from electrocution or fire, the power is **NOT** connected to the opener, and disconnect power to circuit **BEFORE** removing cover to establish permanent wiring connection. Garage door installation and wiring **MUST** be in compliance with **ALL** local electrical and building codes. Be sure the opener is grounded.

Ground Tab Green Ground Screw Ground Wire Black Wire **PERMANENT WIRING CONNECTION**  
White Wire Black Wire 28 When the light beam is obstructed or misaligned while the door is closing, the door will reverse and the garage door opener lights will flash ten times. If the door is already open, it will not close. 1. Check to make sure the LEDs in both sensors are glowing steadily. The LEDs in both sensors will glow steadily if they are aligned and wired correctly. **RED WHITE WHITE GREY Green LED SENDING SENSOR RECEIVING SENSOR Amber LED** If the receiving sensor is in direct sunlight, switch it with sending sensor so it is on the opposite side of the door. invisible light beam Figure 1 29 The adjustment allows you to program where the door will stop in the open **UP** and close **DOWN** position. The electronic controls sense the amount of force required to open and close the door. The force is adjusted automatically when you program the travel. **NOTE** If anything interferes with the door's upward travel it will stop. If anything interferes with the door's downward travel, it will reverse. **UP** Open **DOWN** Close One Piece Doors Only When setting the UP travel for a one-piece door ensure that the door does not slam backwards when fully open **UP**. Without a properly installed safety reversal system, persons particularly small children could be **SERIOUSLY INJURED** or **KILLED** by a closing garage door. To prevent damage to vehicles, be sure fully open door provides adequate clearance. **UP** Button Adjustment Button **DOWN** Button **PROGRAMMING BUTTONS CORRECT INCORRECT** 30 The garage door opener lights will flash twice and the **DOWN** Button will begin to flash. **IMPORTANT NOTE** For one piece door installation refer to page 30.

4. Press and hold the **DOWN** Button until the door is in the desired **DOWN** position. **NOTE** The **UP** and **DOWN** Button can be used to move the door up and down as needed. 5. Once the door is in the desired **DOWN** position press and release the Adjustment Button. The garage door opener lights will flash twice and the **UP** Button will begin to flash. Without a properly installed safety reversal system, persons particularly small children could be **SERIOUSLY INJURED** or **KILLED** by a closing garage door. When the door travels to the programmed **UP** position, the **DOWN** Button will begin to flash. 7. Press and release the **DOWN** Button. The door will travel to the programmed **DOWN** position. If the garage door opener lights are flashing 10 times during the steps for Programming the Travel, the safety reversal sensors are misaligned or obstructed refer to page 29. When the sensors are aligned and unobstructed, cycle the door through a complete up and down cycle using the remote control or the **UP** and **DOWN** buttons. Programming is complete. If you are unable to operate the door up and down, repeat the steps for Programming the Travel. 31 **ADJUST** If the door stops and does not reverse on the obstruction, the downward travel needs to be increased refer to Adjustment Step 1. **NOTE** On a sectional door, make sure adjustment is done for correct door arm bend a straight up and down position. **IMPORTANT SAFETY CHECK** Test the Safety Reverse System after each adjustment of door arm length, limits, or force controls.

Without a properly installed safety reversing system, persons particularly small children could be SERIOUSLY INJURED or KILLED by a closing garage door. The door will not move more than an inch 2.5 cm, and the opener lights will flash. The garage door opener will not close from a remote control if the LED indicator safety reversing sensor is off alerting you to the fact that the sensor is misaligned or obstructed. Without a properly installed safety reversing sensor, persons particularly small children could be SERIOUSLY INJURED or KILLED by a closing garage door. Safety Reversing Sensor Safety Reversing Sensor 32 Check with local codes for disposal instructions. ALWAYS wear protective goggles and eye protection when changing the battery or working around the battery compartment. Battery Cover Battery Status LED 33 Test the Battery 1. Unplug the garage door opener. The battery status LED will either glow solid orange in indicating opener is operating on battery power or will flash indicating low battery power. NOTE Make sure the garage door opener is unplugged. 2. Open and close the door using the remote control or door control. The garage door opener may run slower if the battery is not fully charged. The battery will take 24 hours to fully charge. 3. Plug in the garage door opener. Verify the battery status LED is flashing green, indicating the battery is charging. Charge the Battery The battery charges when the garage door opener is plugged into a 110 V electrical outlet that has power and requires 24 hours to fully charge.

A fully charged battery supplies 12Vdc to the garage door opener for one to two days of normal operation during an electrical power outage. After the electrical power has been restored, the battery will recharge within 24 hours. The battery will last approximately 1 to 2 years with normal usage. Instructions for replacement are provided with the battery. To obtain maximum battery life and prevent damage, disconnect the battery when the garage door opener is unplugged for an extended period of time, such as a summer or winter home. NOTE When the garage door opener is in battery backup mode the garage door opener lights, Timer to Close, and Remote Close features are unavailable. Battery Status LED NOTE The Battery Status LED is most visible with the garage door opener light off. Battery does not have to be fully charged to operate the garage door opener. GREEN LED All systems are normal. ORANGE LED The garage door opener has lost power and is in battery backup mode. PLEASE call for replacement battery to allow your system to operate during a power outage. This stepbystep guide will help you connect your WiFi Garage Door Opener to the internet through your home's WiFi network. Press Start to begin the process by scanning for available networks. Tap EXIT to reconnect your mobile device to your home's WiFi network. To erase the WiFi settings, see page 40. To learn more go to smartgdo.com. App Store is a service mark of Apple Inc. Google Play is a trademark of Google Inc. 34 NEVER permit children to operate or play with garage door control push buttons or remote controls. 3.

<http://www.bouwdata.net/evenement/boss-od-1-manual>