



**File Name:** Craftsman 40cc 18 in gas chain saw manual.pdf

**Size:** 3547 KB

**Type:** PDF, ePub, eBook

**Category:** Book

**Uploaded:** 29 May 2019, 20:28 PM

**Rating:** 4.6/5 from 653 votes.

## Download Now!

Please check the box below to proceed.



I'm not a robot



reCAPTCHA  
Privacy - Terms

## Book Descriptions:

# Craftsman 40cc 18 in gas chain saw manual



If this Gas Chain Saw is used for commercial or rental purposes, this warranty applies for 30 days from the date of purchase. Because a chain saw is a high-speed woodcutting tool, careless or improper use of this tool can cause serious injury. Regular users should have hearing checked regularly as chain saw noise can damage hearing. Follow all safety rules to help avoid kickback and other forces which can result in serious injury. Never modify your saw. The result is a lightning fast, reverse reaction which kicks the guide bar up and back toward the operator. Pinch Kickback and Pullin occur when the chain is suddenly stopped by being pinched, caught, or by contacting a foreign object in the wood. This sudden stopping of the chain results in a reversal of the chain force used to cut wood and causes the saw to move in the opposite direction of the chain rotation. Pinch Kickback drives the saw straight back toward the operator. Pullin pulls the saw away from the operator. Keep working area free from obstructions such as other trees, branches, fueling site before starting, rocks, fences, stumps, etc. A loose or dull chain can 3 Never use metal to hold the cut open. MAINTAIN CONTROL Stand to the left of the saw Thumb on \ Never reverse hand position. Grip the rear handle with your right hand whether you are right or left handed. CHAIN BRAKE If this saw is to be used for commercial logging, you must order and install a chain brake to comply with Federal OSHA Regulations for Commercial Logging. Contact your Sears Service Center or call 18002355878. If you operate a chain saw in a state or locale where such regulations exist, you are legally responsible for maintaining the operating condition of these pads. Failure to do so is a violation of the law. NOTE It is normal to hear the fuel filter rattle in an empty fuel tank. ASSEMBLY Your saw is fully assembled, and no assembly is necessary. Release the throttle lockout and trigger white holding the fast Idle lock button. <http://strahovka66.ru/userfiles/fluke-multimeter-manual-73.xml>

- craftsman 40cc 18 in gas chainsaw manual, craftsman 40cc 18 in gas chain saw manual, craftsman 40cc 18 in gas chain saw manual as chainsaw manual, craftsman 40cc 18 in gas chain saw manual, craftsman 40cc 18 in gas chain saw manual instructions, craftsman 40cc 18 in gas chain saw manuals.



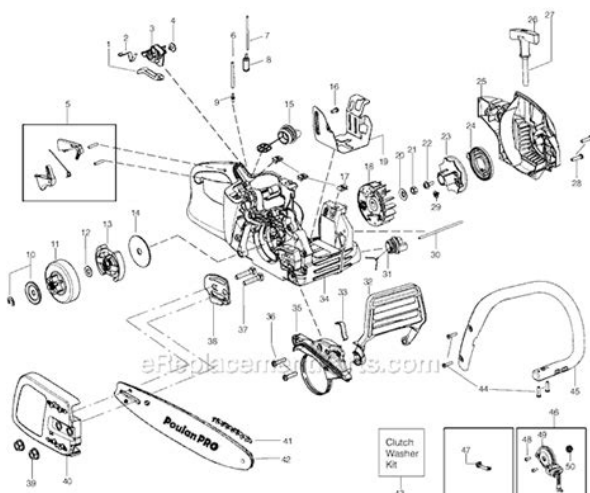
**PRIMER BULB** The Primer Bulb circulates fuel to the carburetor to provide quicker starting. **CHAIN TENSION** It is normal for a new chain to stretch during first 30 minutes of operation. If Craftsman bar oil is not available, you may use a good grade SAE 30 oil until you are able to obtain Craftsman brand. The oil output is automatically metered during operation. Your saw will use approximately one tank of bar oil for every tank of fuel mix. Always fill the bar oil tank when you fill the fuel tank. **FUELING ENGINE** This engine is certified to operate on unleaded gasoline. Before operation, gasoline must be mixed with a good quality 2-cycle aircooled engine oil. We recommend Craftsman brand oil. Mix gasoline and oil at a ratio of 40:1. A 40:1 ratio is obtained by mixing 3.2 ounces of oil with 1 gallon of unleaded gasoline. **DO NOT USE** automotive oil or motor oil. These oils will cause engine damage. When mixing fuel follow the instructions printed on the container. Use fresh fuel next season. See **STORAGE** instructions for additional information. Never use engine or carburetor cleaner products in the fuel tank or permanent damage may occur. See the **STORAGE** section for additional information. Grip front handle with your left hand and place right foot through rear handle. **Starter Rope Handle Left Hand on Front Handle** **IMPORTANT** Experience indicates that alcohol blended fuels called gasohol or using ethanol or methanol can attract moisture which leads to separation and Foot Through Rear Handle formation of acids during storage. Then, To avoid engine problems, the fuel system squeeze and hold throttle trigger. Drain the gas down and hold. Next, release the tank, start the engine and let it run until throttle trigger. Do not let starter rope snap back. Then, push in choke knob fully. If engine still fails to start, refer to the **TROUBLESHOOTING** chart or call 18002355878. Keep the engine at full speed the entire you are cutting. <http://www.innotec-industrie.be/userfiles/file/fluke-netdaq-2640a-manual.xml>



**TREE FELLING TECHNIQUES** **WARNING** Check for broken or dead branches which can fall while cutting causing serious injury. Do not cut near buildings or electrical wires if you do not know the direction of tree fall, nor cut at night since you will not be able to see well, nor during bad weather such as rain, snow, or strong winds, etc. Carefully plan your sawing operation in advance. Clear the work area. You need a clear area all around the tree so you can have secure footing. Look for decay and rot. Make sure there is enough room for the tree to fall. Maintain a distance of 2-12 tree lengths

from the nearest person or other objects. Engine noise can drown out a warning call. Remove dirt, stones, loose bark, nails, staples, and wire from the tree where cuts are to be made. A notch is cut on the side of the tree in the desired direction of fall. After a felling cut is made on the opposite side of tree, the tree should fall in the direction of the notch. Next complete the notch by cutting the bottom. When the tree does not fall completely, set the saw aside and pull down the tree with a cable winch, block and tackle, or tractor. Do not use your saw to cut down a partially fallen tree. **CUTTING A FALLEN TREE** **Bucking** the term used for cutting a fallen tree to the desired log size. **WARNING** Do not stand on the log being cut. Any portion can roll causing loss of footing and control. Do not stand downhill of the log being cut. **IMPORTANT POINTS** Cut only one log at a time. Stop the saw, drive a wedge of plastic or wood into the cut until the saw can be removed easily. See illustration above for cutting logs with a pressure side. When undercutting use light upward pressure. The saw will tend to push back toward you. **WARNING** Never turn the saw upside down to undercut. The saw cannot be controlled in this position. Always make your first cut on the pressure side of the log. First cut on pressure side of log. Undercutting could cause limbs to fall and pinch the saw.

**PRUNING** **WARNING** Limit pruning to limbs shoulder height or below. Do not cut if branches are higher than your shoulder. Avoid being struck by the branch or the saw when the tension in the wood fibers is released, an overcut so that the stump of the limb protrudes 1 to 2 inches from the trunk of the tree. To receive full value from the warranty, the operator must maintain unit as instructed. A new spark plug and air filter element assures proper air/fuel mixture and helps your engine run better and last longer. **WARNING** Disconnect the spark plug before performing maintenance except for carburetor adjustments. **NOTE** It is normal for a small amount of oil to appear under the saw after engine stops. The chain should rotate freely. **DO NOT** operate the saw if the chain is loose. **12** Check the condition of the guide bar each time the chain is sharpened. Always clean your air filter after 15 tanks of fuel or 5 hours of operation, whichever comes first. Air dry completely before reinstalling. Remove these burrs with a flat file. Replace screen if breaks. Plug are found. The chain is sharp and can cut you even when it is not moving. **Bar Clamp Bar Nuts** **14** Wear package. Hold chain with the drive your protective equipment and observe links as shown, all safety precautions. During the low speed mixture adjustment recheck idle speed after each turn of the screw. The chain must not move at idle speed. Pull trigger done improperly can permanently damage the engine as well as the carburetor. If you require further assistance or are unsure about performing this procedure, call our customer assistance help line at 18002355878. Old fuel, a dirty air filter, dirty fuel filter, or flooding may give the impression of an improperly adjusted carburetor. Check these conditions before adjusting the carburetor. There are three adjustment screws on the carburetor. They are labeled H, L, and T.



<http://www.bouwdata.net/evenement/boss-hp12-manual>

They are located In the area just above the primer bulb. Start motor, let it run for 3 minutes, and proceed to the adjustment section. If engine does not start, refer to trouble shooting chart or call 18002355878. 11; Damage to the engine can occur. Then accelerate the engine and note performance. Repeat this procedure as necessary for proper adjustment. After completing adjustments, check for acceleration and chain movement at idle. After completing adjustments, check for acceleration and chain movement at idle. Reset if necessary. Acceleration Check If the engine dies or hesitates instead of accelerating, turn the low speed mixture adjustment counterclockwise, until you have smooth acceleration with no chain movement at idle. EXTERNAL SURFACES If your chain saw is to be stored for a period of time, clean it thoroughly before storage. FUEL SYSTEM Under Fueling Engine in the Operating Section of this manual, see message labeled IMPORTANT regarding the use of gasoline in your chain saw. Fuel stabilizer is an acceptable alternative in minimizing the formation of fuel gum deposits during storage. Add stabilizer to the gasoline in the fuel tank or fuel storage container. Follow the mix instructions found on stabilizer containers. Run engine at least 5 minutes after adding stabilizer. CRAFTSMAN 401, 2cycle engine oil air cooled is especially blended with fuel stabilizer, If you do not use this Sears oil, you can add a fuel stabilizer to your fuel tank. I Install new spark plug. Check for dirty fuel filter; replace. Chain moves at idle speed. Chain does not move when engine is accelerated. Chain clatters or cuts roughly. Chain stops ! within the cut. I Chain cuts at an angle. SEARS must warrant purchased.

<http://artcustomdrums.com/images/98-mustang-repair-manual-pdf.pdf>

**IMPORTANT MANUAL Do Not Throw Away**

**SEARS**

Operator's Manual



Model No.  
358.351080 - 18"  
358.351160 - 16"  
358.351180 - 18"



Always Wear Eye Protection

**CUSTOMER ASSISTANCE**  
1-800-235-5878

HOURS (CST)  
Mon. - Sat. 7 a.m. - 7 p.m.  
Sun. 10 a.m. - 7 p.m.

**WARNING:**  
READ THE OPERATOR'S MANUAL AND FOLLOW ALL WARNINGS AND SAFETY INSTRUCTIONS. FAILURE TO DO SO CAN RESULT IN SERIOUS INJURY.

**CRAFTSMAN®**  
2.4 cu. in./40cc 2-CYCLE  
2.4 cu. in./40cc 2-CYCLE  
2.6 cu. in./42cc 2-CYCLE  
GASOLINE CHAIN SAW

- Assembly
- Operation
- Customer Responsibilities
- Service and Adjustments
- Repair Parts

Sears, Roebuck and Co., Hoffman Estates, IL 60179 U.S.A.

530-083360-1-08/05

DIAGNOSIS SEARS recommends that you retain all The owner shall not be charged for diagnostic receipts covering maintenance on your lawn and garden equipment engine, but SEARS cannot deny warranty solely for a reason that a warranted part is defective if the diagnostic work is performed at an approved SEARS servicing center. ensure the performance of all scheduled center.

<https://jdlwealth.com/images/98-mustang-manual.pdf>



<http://bilagroup.com/wp-content/plugins/formcraft/file-upload/server/content/files/162869b9d5ad88--ca-d50-service-manual.pdf>

<defaico.com/d/files/93-buick-park-avenue-repair-manual.pdf>

<https://www.interactivelearnings.com/forum/selenium-using-c/topic/17539/boss-hp12-manual>